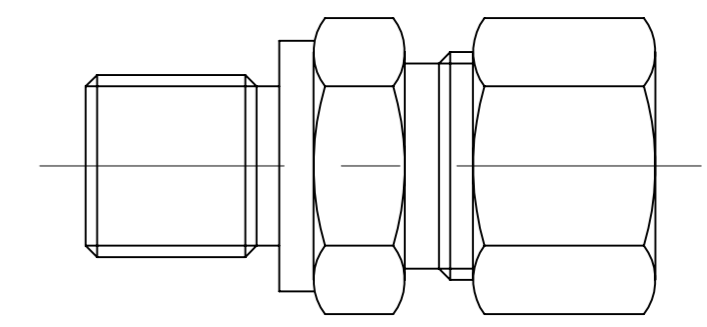


#### Rechte inschroefverbinding: (CR..LG..) BSP.

..L	Werk-druk	Buis diam.	Schroef-draad	Artikelnr.
<b>L</b> = Lichte uitvoering.	315 Bar	Ø 6 mm.	1/8" BSP	CR 6LG18
	315 Bar	Ø 6 mm.	1/4" BSP	CR 6LG14
	315 Bar	Ø 8 mm.	1/8" BSP	CR 8LG18
	315 Bar	Ø 8 mm.	1/4" BSP	CR 8LG14
	315 Bar	Ø 8 mm.	3/8" BSP	CR 8LG38
	315 Bar	Ø 8 mm.	1/2" BSP	CR 8LG12
	315 Bar	Ø 10 mm.	1/4" BSP	CR10LG14
	315 Bar	Ø 10 mm.	3/8" BSP	CR10LG38
	315 Bar	Ø 10 mm.	1/2" BSP	CR10LG12
	315 Bar	Ø 12 mm.	1/4" BSP	CR12LG14
	315 Bar	Ø 12 mm.	3/8" BSP	CR12LG38
	315 Bar	Ø 12 mm.	1/2" BSP	CR12LG12
	315 Bar	Ø 15 mm.	3/8" BSP	CR15LG38
	315 Bar	Ø 15 mm.	1/2" BSP	CR15LG12
	315 Bar	Ø 15 mm.	3/4" BSP	CR15LG34
	160 Bar	Ø 18 mm.	1/2" BSP	CR18LG12
	160 Bar	Ø 18 mm.	3/4" BSP	CR18LG34
	160 Bar	Ø 22 mm.	1/2" BSP	CR22LG12
	160 Bar	Ø 22 mm.	3/4" BSP	CR22LG34
	100 Bar	Ø 28 mm.	1" BSP	CR28LG10
100 Bar	Ø 35 mm.	5/4" BSP	CR35LG54	
100 Bar	Ø 42 mm.	3/2" BSP	CR42LG32	



#### Rechte inschroefverbinding: (CR..ZG..) BSP.

..Z	Werk-druk	Buis diam.	Schroef-draad	Artikelnr.
<b>Z</b> = Zware uitvoering.	630 Bar	Ø 6 mm.	1/4" BSP	CR 6ZG14
	630 Bar	Ø 8 mm.	1/4" BSP	CR 8ZG14
	630 Bar	Ø 8 mm.	3/8" BSP	CR 8ZG38
	630 Bar	Ø 10 mm.	1/4" BSP	CR10ZG14
	630 Bar	Ø 10 mm.	3/8" BSP	CR10ZG38
	630 Bar	Ø 10 mm.	1/2" BSP	CR10ZG12
	630 Bar	Ø 12 mm.	3/8" BSP	CR12ZG38
	630 Bar	Ø 12 mm.	1/2" BSP	CR12ZG12
	630 Bar	Ø 14 mm.	3/8" BSP	CR14ZG38
	630 Bar	Ø 14 mm.	1/2" BSP	CR14ZG12
	400 Bar	Ø 16 mm.	3/8" BSP	CR16ZG38
	400 Bar	Ø 16 mm.	1/2" BSP	CR16ZG12
	400 Bar	Ø 20 mm.	1/2" BSP	CR20ZG12
	400 Bar	Ø 20 mm.	3/4" BSP	CR20ZG34
	250 Bar	Ø 25 mm.	3/4" BSP	CR25ZG34
	250 Bar	Ø 25 mm.	1" BSP	CR25ZG10
	250 Bar	Ø 30 mm.	1" BSP	CR30ZG10
	250 Bar	Ø 30 mm.	5/4" BSP	CR30ZG54
	250 Bar	Ø 38 mm.	5/4" BSP	CR38ZG54
	250 Bar	Ø 38 mm.	3/2" BSP	CR38ZG32

#### Rechte inschroefverbinding: (CR..LM..) Metrisch.

..L	Werk-druk	Buis diam.	Schroef-draad	Artikelnr.
<b>L</b> = Lichte uitvoering.	315 Bar	Ø 6 mm.	M10x1	CR 6LM10
	315 Bar	Ø 8 mm.	M12x1,5	CR 8LM12
	315 Bar	Ø 10 mm.	M14x1,5	CR10LM14
	315 Bar	Ø 10 mm.	M16x1,5	CR10LM16
	315 Bar	Ø 10 mm.	M18x1,5	CR10LM18
	315 Bar	Ø 10 mm.	M22x1,5	CR10LM22
	315 Bar	Ø 12 mm.	M16x1,5	CR12LM16
	315 Bar	Ø 12 mm.	M18x1,5	CR12LM18
	315 Bar	Ø 12 mm.	M22x1,5	CR12LM22
	315 Bar	Ø 15 mm.	M18x1,5	CR15LM18
	315 Bar	Ø 15 mm.	M22x1,5	CR15LM22
	315 Bar	Ø 18 mm.	M22x1,5	CR18LM22
	160 Bar	Ø 22 mm.	M26x1,5	CR22LM26
	160 Bar	Ø 28 mm.	M33x2	CR28LM33
	160 Bar	Ø 35 mm.	M42x2	CR35LM42

iHydraulicS

#### Rechte inschroefverbinding: (CR..ZM..) Metrisch.

..Z	Werk-druk	Buis diam.	Schroef-draad	Artikelnr.
<b>Z</b> = Zware uitvoering.	640 Bar	Ø 6 mm.	M10x1	CR 6ZM10
	640 Bar	Ø 8 mm.	M14x1,5	CR 8ZM14
	640 Bar	Ø 10 mm.	M16x1,5	CR10ZM16
	640 Bar	Ø 12 mm.	M18x1,5	CR12ZM18
	640 Bar	Ø 14 mm.	M20x1,5	CR14ZM20
	400 Bar	Ø 16 mm.	M22x1,5	CR16ZM22
	400 Bar	Ø 20 mm.	M27x2	CR20ZM27
	400 Bar	Ø 25 mm.	M33x2	CR25ZM33