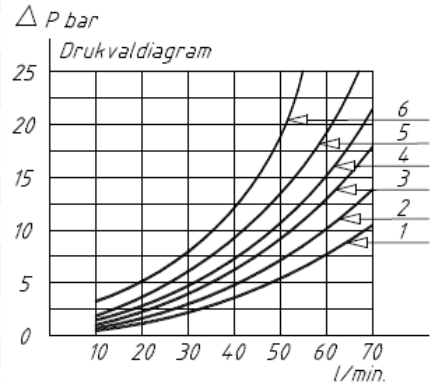
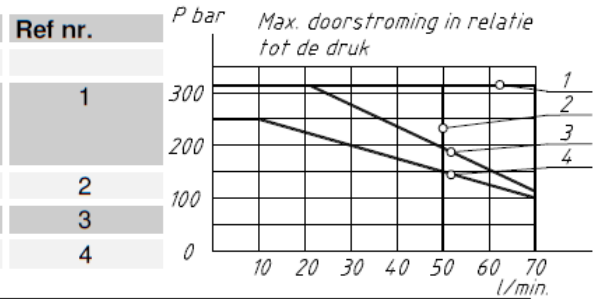


Stuurschuif type:	P>T	P>A	P>B	A>T	B>T
A2- A11S- A12S- A13S A14S- G2- H2	5	6	6	6	6
B2- B11C- B12C- B13C- B14C M2A- M2C- U2		3	3	3	3
C2- C11A- C12A- C13A- C14A	1	2	2	1	1
D2- D11C- D12C- D13C- D14C		1	1	2	2
E2- E11C- E12C- E13C- E14C T11C- T12C		2	2	1	1
K2- R2		2	2	4	4
A11A- A12A- A11C- A12C		3	3	3	3
N11C- N12C- N2		3	3		



Stuurschuif type:	Ref nr.
B2- B11C- B12C- B13C- B14C- C2- C11A- C12A C13A- C14A- T12C- D2- D11C- D12C- D13C- D14C E2- E11C- E12C- E13C- E14C- T11C	1
A2- A11S- A12S- A13S- A14S- G2- H2- K2- R2	2
A11C- A12C- A11A- A12A- M2C- M2A- U2	3
N11C- N12C- N2	4



Grootte: LC1DZ ISO 4401 CETOP 3.

